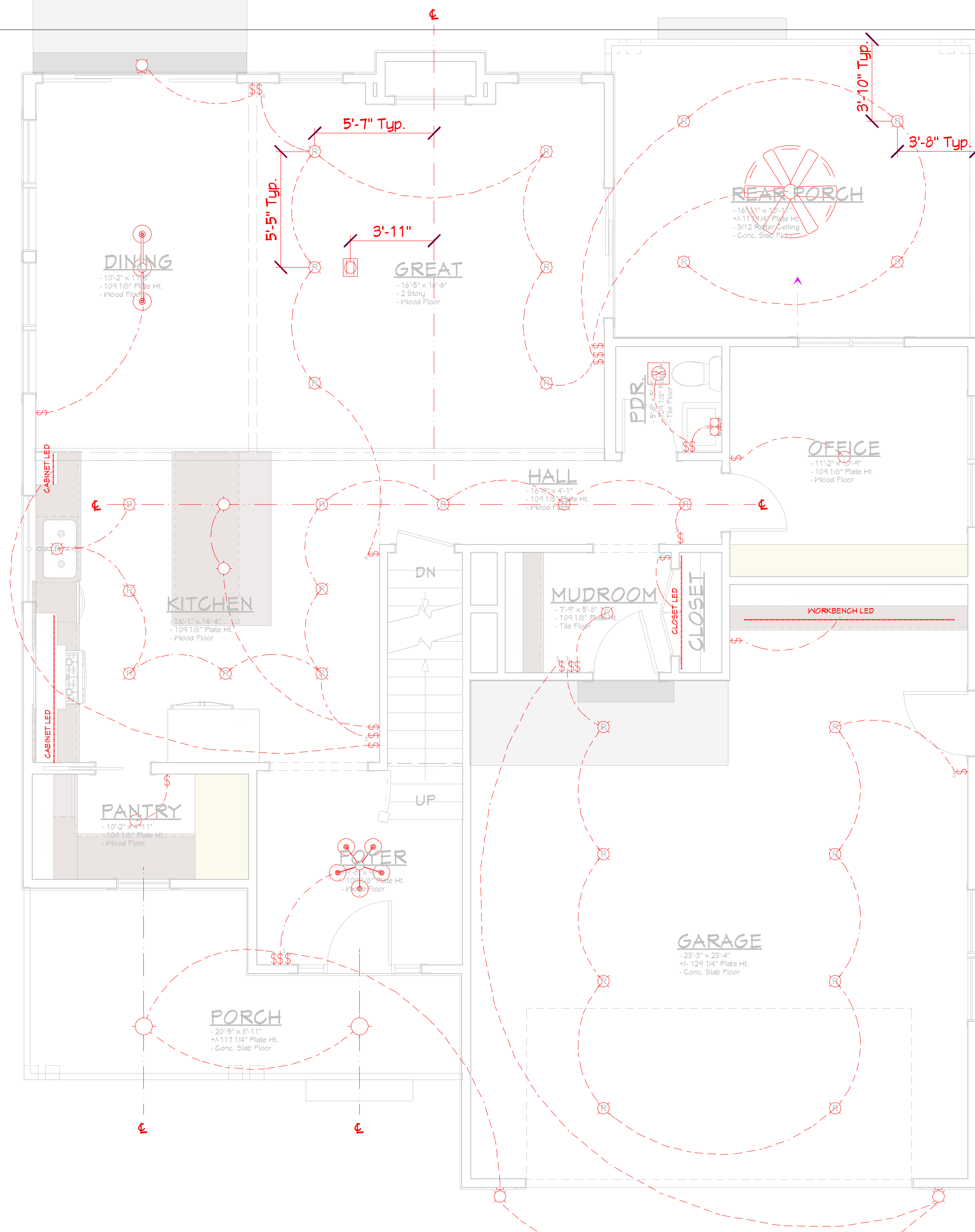


ELECTRICAL SCHEDULE		
2D SYMBOL	DESCRIPTION	QTY
	RECESSED DOWN LIGHT 6	30
	SINGLE POLE	15
	THREE WAY	6
	ROPE LIGHT	4
	FOUR WAY	3
	OLD WORLD SCONCE	3
	CAGED LANTERN PENDANT	2
	CONTEMPORARY FLUSH	2
	CRAFTSMAN LANTERN	2
	6 BLADE CEILING FAN	1
	DUPLEX, FLOOR MOUNTED	1
	EXHAUST FAN	1
	FRANKLIN TRIPLE	1
	SCONCE 2	1
	SEASIDE CHANDELIER	1



Standard items:

- All wiring as needed for appliances and mechanicals
- CO/Smoke detectors per code
- Outlets per code; shown only as needed for clarification or when specific locations are requested
- Recessed doorbell
- Conduit from great room cabinets to over mantle for TV
- Switch at attic access with at least one keyless light in attic

Upgrades available:

- Pantry cabinet LED
- Porch mood LED
- Office cabinet sconces

Notes:

- Review bath fan locations and which fans are to be constant run



This document is the intellectual property of Bezaleel Designs, LLC, and may only be re-used with contractual consent. Any violation or attempt to recreate or copy this product may result in legal matters.

SMITH RESIDENCE
 1234 Example St.
 Grand Rapids, MI 49544

NUMBER	REVISION TABLE	DATE	COMPLETED BY
PRELIM03		8.30.24	T. EKEMA
PRELIM04		9.2.24	T. EKEMA
PRELIM05		9.3.24	T. EKEMA
PROGRESS		9.4.24	T. EKEMA
BID SET		9.25.24	T. EKEMA

PUBLISH DATE: 10/24/2024

Note: Although there is no reason to doubt the accuracy or completeness of these floor plans, the maker can provide no guarantee or warranty against human error. Subcontractors are responsible to review and confirm all dimensions and details with the general contractor and owner. All dimensions take precedence over the scale of the drawing. All dimensions are figured as rough. 24x being 1 1/2 x 3 1/2.

Electrical Plan - Main
 3/8 in = 1 ft